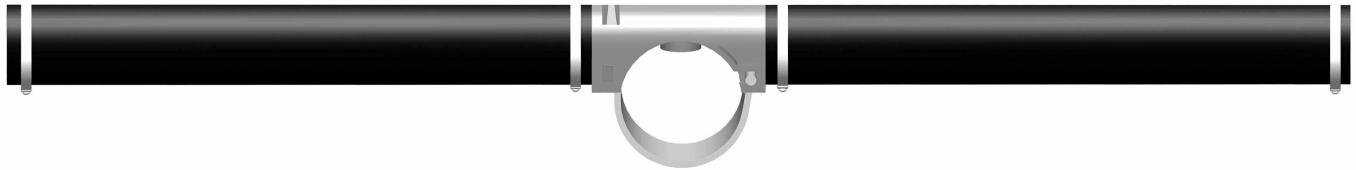


# SSI™ SNAPPY SADDLE™ DIFFUSERS

AFTS21000 62mm Tube



- Highest possible quality and technology means years of trouble-free efficient operation.
- Highest possible SOTE independently tested per ASCE and lowest possible headloss.
- Compression molded EPDM membranes have very tight wall thickness tolerances, a long track record and exhibit even air distribution and minimal shrinkage over time.
- One-piece lightweight but strong ABS body makes handling during installation very easy.
- Single orifice on top center line of pipe means little chance for a single diffuser failure to contaminate all diffusers.
- Experienced Engineering and Drafting staff with years of practice to assist you.
- Integral register prevents cantilevered diffusers from axial rotation around the header pipe.
- 212° F (100° C) temperature resistance and environmentally-friendly ABS body.
- Individual thermocouples in each cavity of compression mold = 100% quality control.
- Low membrane plasticizer content to reduce shrinkage and hardening, but enough to avoid creep.
- Multiple integral check valves keep your aeration piping system clean.
- In stock on 3 continents in 4 locations.

## TUBE MEMBRANES

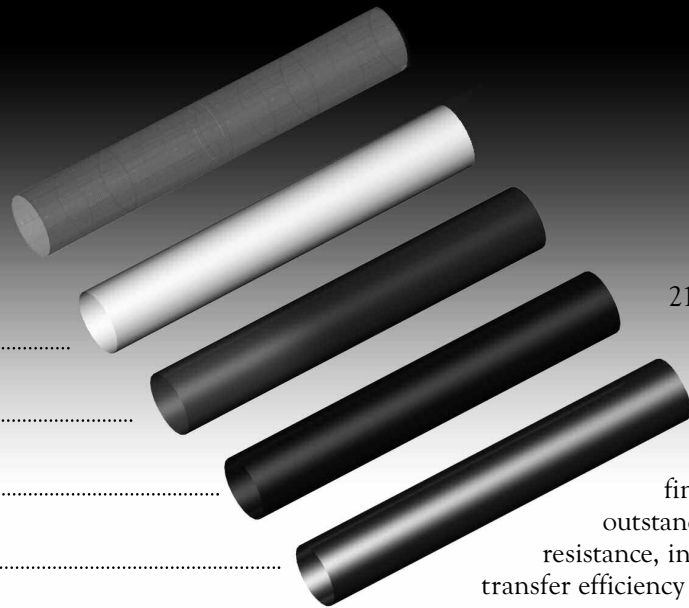
WEBBED URETHANE .....

PTFE DISPERSION .....

EPDM .....

ANTI-STATIC EPDM .....

fEPDM .....



21st century special materials such as PTFE-coated surface layers, fEPDM, anti-static EPDM, webbed urethane, as well as reinforced and coated ultra fine bubble membranes, offer outstanding chemical and fouling resistance, in addition to the highest oxygen transfer efficiency at a headloss you can live with.

*Please see reverse for additional technical data*



STAMFORD SCIENTIFIC  
INTERNATIONAL  
INCORPORATED

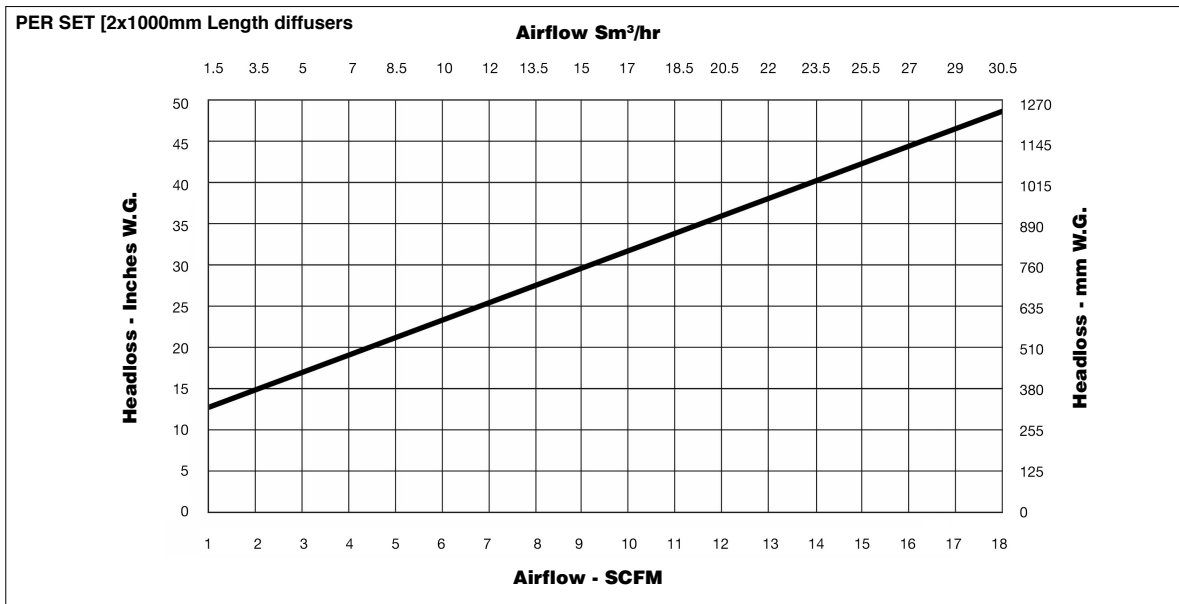
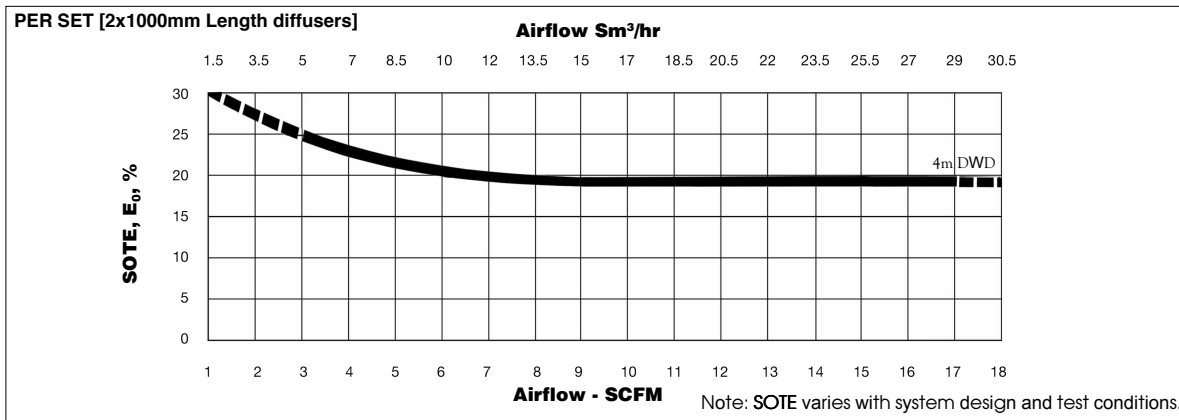
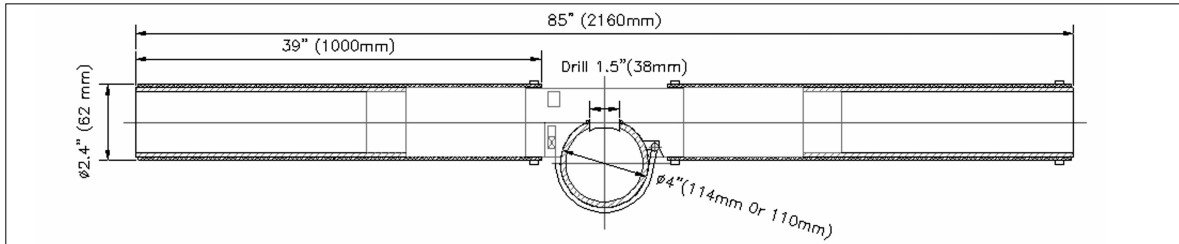
+1-845-454-8171 TEL  
+1-845-454-8094 FAX

4 TUCKER DRIVE  
POUGHKEEPSIE, NEW YORK 12603 USA  
**www.StamfordScientific.com**  
EMAIL: INFO@STAMFORDSCIENTIFIC.COM

# SSI™ SNAPPY SADDLE™ DIFFUSERS

*continued*

## AFTS21000 62mm Tube



DESIGN FLOW PER SET	FLOW RANGE PER SET	ACTIVE SURFACE AREA	WEIGHT
2 – 17 SCFM (3.5 – 24.5 Sm <sup>3</sup> /hr)	0 – 22.0 SCFM (0 – 37.5.0 Sm <sup>3</sup> /hr)	3.25 ft <sup>2</sup> (0.30 m <sup>2</sup> ) /set	6.30 lbs (2.86 Kg) /set



STAMFORD SCIENTIFIC  
INTERNATIONAL  
INCORPORATED

+1-845-454-8171 TEL  
+1-845-454-8094 FAX

4 TUCKER DRIVE  
POUGHKEEPSIE, NEW YORK 12603 USA  
**www.StamfordScientific.com**  
EMAIL: INFO@STAMFORDSCIENTIFIC.COM